



NEUROHUB

NEWSLETTER

MAY
2026



Monthly Sessions

Buddie's Play Den

First & last Saturday of the month we host an Under 10's SEN play session at Buddie's Play Den in Clay Cross.

Movement to Music

First Saturday of the month we host themed SEN dance sessions with Sunflower Dance.

Chester's Den

Third Sunday of each month we host a SEN play session at Chester's Den at the Football Club.

Killamarsh Play Session

First Sunday of each month we host a SEN play Session at Killamarsh Active Leisure Centre.

Level-Up

One Wednesday each month we host family board game sessions at the Board & Bean cafe in Chesterfield to socialise and relax.

Creative Connections

One Friday evening a month we host a family creative arts session that includes music, art, drama and movement activities at DCAS.

Under 12's Family Sensory Session

One Saturday each month we host a sensory session at the Fairplay Centre where families can access sensory activities and our sensory room.



Photo taken at our Adam's Happy Hens Family Farm Trip

Upcoming Events

- **RSE Workshop 9th June**
- **Making Sense of Your Child's Sensory World Workshop - Wednesday 10th June**
- **Drop-In Sessions with DPCV, Educational Psychologists and DIASS 5th & 19th June**

See upcoming events at the end of the newsletter for further information



01246 886475



neurohub@fair-play.co.uk



neurohub-derbyshire



neurohub_derbyshire



MAY RE-CAP

MAY
2026



As well as all of our regular sessions, we have had some lovely family sessions over half term too! Have a look at what we got up to...

MATLOCK SUPPORT GROUP



HORSE RIDING



LEVEL-UP - FAMILY BOARD GAME SESSION



CREATIVE CONNECTIONS - FAMILY CREATIVE ARTS SESSION



BARNYARD YOGA/ ADAM'S HAPPY HENS FARM FAMILY DAY



To see more updates and photos from any of our sessions - please have a look at our social media pages!



01246 886475



neurohub@fair-play.co.uk



neurohub-derbyshire



neurohub_derbyshire



NEW SESSIONS

MAY
2026

HAVE YOUR SAY!

Lots of families have shared with us that they would like more social sessions for teenagers and young adults to attend.

We completely agree and would love to make this happen!

We are hoping to set up **2 new sessions...**

-  **a youth group 11-17 years**
-  **a group for young adults 18-25 years**

To make these sessions successful we need your help - please let us know suggestions for **locations, days/times**, certain **activities**, you think your children and young people would like to get involved in.

Please email the NeuroHub team on neurohub@fair-play.co.uk to share your ideas.



NEUROHUB
NEURODIVERGENCE THRIVES HERE

CREATIVE CONNECTIONS

SEN FAMILY CREATIVE ARTS SESSIONS
FOR CHILDREN/YOUNG PEOPLE AGED UP TO 25 YEARS & THEIR FAMILIES/CARERS

📍 **DCAS, SPRING BANK ROAD, CHESTERFIELD, S40 1NL**

🕒 **5:30PM - 7PM**

📅 **2026 SESSIONS:**

MAY 29 TH	SEPTEMBER 25 TH
JUNE 26 TH	OCTOBER 23 RD
JULY 24 TH	NOVEMBER 27 TH
AUGUST 28 TH	DECEMBER 18 TH

Come take part in creative activities, build confidence & meet others! (No Diagnosis Needed) Fun For The Whole Family!

£5 PER CHILD/YOUNG PERSON PARENTS/CARERS - FREE!

PLEASE CONTACT THE NEUROHUB TEAM FOR ANY FURTHER INFORMATION ON 01246 886475

These are family sessions that we currently run once a month & are designed for children and young people of all ages to enjoy!



NEUROHUB
NEURODIVERGENCE THRIVES HERE

LEVEL UP

SEN Family Drop-in Session
Come to socialise, play board games, as well as enjoy lovely food & drinks in the cafe!
Fun for all the family!

Children/ Young People Welcome Aged up to 25 years

Upcoming Sessions in 2026:

27th May	26th August
24th June	30th September
29th July	28th October
	25th November

1:30pm - 5:30pm

Unit 1, 4 New Beetwell Street, Chesterfield, S40 1QR

FREE!

BOARD & BEAN

Fairplay

For more information please contact the office on 01246 886475



UPCOMING EVENTS

MAY
2026



Joined Up Care Derbyshire

NEUROHUB
NEURODIVERGENCE THRIVES HERE

Fairplay

SOCIAL DROP-IN

Location:
Fairplay,
Alexandra Road West,
Chesterfield,
S40 1NP

Dates for 2026:
10am-12pm
January 9th & 23rd
February 6th & 20th
March 6th & 20th
April 10th & 17th
May 8th & 22nd
~~June 5th & 19th~~
~~July 3rd & 17th~~
August 7th & 21st
September 4th & 18th
October 2nd & 16th
November 6th & 20th
December 4th & 18th

Please park in Mecca Bingo's pay and display carpark

- Meet others - Parent/carers, children & young people
- Outdoor play area & activities
- Chance for social support as well as advice & guidance from the NeuroHub team
- Refreshments

For more information please contact hub enquiries on 01246 886475



The social drop-in sessions in June are going to be held at 2 different locations instead of at Fairplay!

This is because we are joining a session, hosted by Derbyshire Parent Carer Voice, where families have the opportunity to come meet an educational psychologist, a DIASS worker as well as get advice and support from the NeuroHub team.



New Parent Carer Drop-In Sessions!

Friendly support, advice & a cuppa – coming to three Derbyshire locations.

Dates & Locations

- Whaley Bridge Town Hall - Friday 22nd May, 10am-2pm
- Bolsover Assembly Hall - Friday 5th June 10am-2pm
- Charles Hill Centre Loscoe - Friday 19th June, 10am-2pm

What's on offer:

- 1-to-1 conversations with a Derbyshire Educational Psychologist (bookable)
- Support from DIASS
- Neuro Hub colleagues
- Warm chat with Forum trustees & parent carers

For more information and to book please visit <https://derbyshireparentforums.co.uk/>

We hope to see you there!

There will be lots of professionals around to offer support & guidance as well as a good cup of tea!



01246 886475



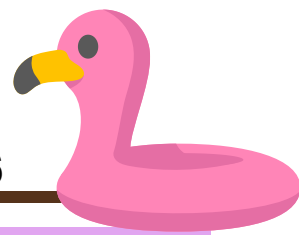
neurohub@fair-play.co.uk



neurohub-derbyshire



neurohub_derbyshire



PUBERTY, GROWING UP & RELATIONSHIPS

9th June 2026
10am-12pm

Fairplay, Alexandra Road West,
Chesterfield, S40 1NP
(please park in Mecca Bingo's
pay & display car park)

Workshop to provide
parents/carers with
information & ideas about
how their child's RSE needs
can be met

FREE but
booking is
required!

Refreshments
Provided

Meet other
parents/
carers

Information
& resources



Workshop Topics Include:

- **Periods, Puberty & Hygiene**
- **Appropriate Touching – Public & Private**
- **Relationships & Friendships**
- **Online Safety & Illegal Content**
- **Understanding Emotions & How To Deal With Them**
- **Problematic Behaviours**



Book now

PLACES ARE LIMITED, please book your place by either clicking the link or scanning the QR code

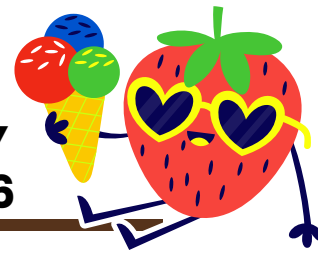
If you have any difficulties booking please email neurohub@fair-play.co.uk





REGULAR SESSIONS FOR PARENTS/CARERS

MAY 2026



We have monthly parent/carer support groups in various areas. These are great opportunities to build support networks with other local understanding parents/carers as well as getting advice and guidance from NeuroHub staff.

We also have 1:1 appointments available for families to book.

Our Social Drop-In sessions, held twice a month, on Friday mornings can also be a great time to meet others as well as get any support needed from the NeuroHub team.

NEUROHUB
NEURODIVERGENCE THRIVES HERE

Fairplay

ALFRETON PARENT/ CARER SUPPORT GROUP

Dates for 2026: All welcome from Christopher Neiper Education Trust schools

9:30am-11am

- 11th June: A safe space to get quality support
- 9th July: A chance to talk to peers who understand
- 13th August: Join us for coffee, cake & a chat!
- 10th September: Advice, guidance & signposting
- 8th October: For parents & carers of children with additional needs
- 12th November
- 10th December

SHIRLAND PRIMARY SCHOOL
PARK LANE,
ALFRETON,
DE55 6BH

PLEASE CONTACT THE NEUROHUB TEAM FOR ANY FURTHER INFORMATION ON 01246 886475

NEUROHUB
NEURODIVERGENCE THRIVES HERE

Fairplay

GLAPWELL PARENT/CARER SUPPORT GROUP

For parents/carers of children with additional needs (no diagnosis needed)

2026 Dates: 9:30am-11:30am:

7th Jan, 4th Feb, 4th March, 1st April, 6th May, 3rd June, 1st July, 5th Aug, 2nd Sept, 7th Oct, 4th Nov, 2nd Dec.

Glapwell Centre,
The Green, Glapwell, Chesterfield
S44 5LW

- Children welcome (toys available!)
- Advice, guidance & signposting
- A safe space to get quality support
- Coffee, cake & a chat!
- A chance to talk to peers who understand

PLEASE CONTACT THE NEUROHUB TEAM FOR ANY FURTHER INFORMATION ON 01246 886475

NEUROHUB
NEURODIVERGENCE THRIVES HERE

Fairplay

CRESWELL PARENT AND CARER SUPPORT GROUP

Dates for 2026: A safe space to get quality support

1:15pm - 2:45pm

- 3rd February: A chance to talk to peers who understand
- 3rd March: Join us for coffee, cake & a chat!
- 12th May: Advice, guidance & signposting
- 9th June: For parents & carers of children with additional needs
- 7th July

CRESWELL C OF E INFANT AND NURSERY SCHOOL
GYPSY LN,
CRESWELL,
WORKSOP,
S80 4HY

PLEASE CONTACT THE NEUROHUB TEAM FOR ANY FURTHER INFORMATION ON 01246 886475

NEUROHUB
NEURODIVERGENCE THRIVES HERE

Fairplay

CHESTERFIELD PARENT AND CARER SUPPORT GROUP

Dates for 2026: A safe space to get quality support

10am-12pm

- 13th January: A chance to talk to peers who understand
- 10th February, 10th March: Join us for coffee, cake & a chat!
- 14th April, 12th May: Advice, guidance & signposting
- 9th June, 14th July: For parents & carers of children with additional needs
- 11th August, 8th September, 13th October, 10th November, 8th December

FAIRPLAY CENTRE,
ALEXANDRA ROAD
WEST,
CHESTERFIELD,
S40 1NP

Please park in the pay & display car park in Mecca Bingo

PLEASE CONTACT THE NEUROHUB TEAM FOR ANY FURTHER INFORMATION ON 01246 886475

NEUROHUB
NEURODIVERGENCE THRIVES HERE

Fairplay

DRONFIELD PARENT AND CARER SUPPORT GROUP

Dronfield Peel Centre, High Street, Dronfield, S18 1PX (Free parking at the Civic Centre or Sainsbury's on Wreakes Lane)

Dates for 2026:

- 21st January 6:30pm-8:30pm
- 25th February 1pm-3pm
- 18th March 6:30pm-8:30pm
- 22nd April 1pm-3pm
- 20th May 6:30pm-8:30pm
- 17th June 1pm-3pm

- For parents & carers of children with additional needs
- Join us for coffee, cake & a chat!
- A chance to talk to peers who understand
- A safe space to get quality advice & support

PLEASE CONTACT THE NEUROHUB TEAM FOR ANY FURTHER INFORMATION ON 01246 886475

NEUROHUB
NEURODIVERGENCE THRIVES HERE

Fairplay

MATLOCK PARENT/CARER SUPPORT GROUP

- Join us for coffee, cake & a chat!
- A chance to talk to peers who understand
- For parents & carers of children with additional needs
- A safe space to get quality support
- Advice, guidance & signposting

Dates for 2026:

All sessions are 10am - 12pm

- 27th January
- 28th July
- 24th February
- 25th August
- 31st March
- 29th September
- 28th April
- 27th October
- 26th May
- 24th November
- 30th June

Ostello Lounge,
Derwent House,
Crown Square,
Matlock DE4 3AT

PLEASE CONTACT THE NEUROHUB TEAM FOR ANY FURTHER INFORMATION ON 01246 886475

REGULAR SESSIONS FOR CHILDREN & YOUNG PEOPLE

MAY 2026

Monthly sessions for children/young people to access! Siblings are always welcome to come join in the activities too. These sessions can be wonderful chances to come get advice & guidance from NeuroHub staff whilst children play.

NEUROHUB
NEURODIVERGENCE THRIVES HERE

Fairplay

CLAY CROSS

SEN SOFT PLAY SESSION
&
PARENT/CARER SUPPORT GROUP

A CHANCE FOR CHILDREN/YOUNG PEOPLE TO SOCIALISE & PLAY

1ST & LAST SATURDAY OF EACH MONTH!
9AM-10AM

A CHANCE TO CHAT WITH OTHER PARENT/CARERS OF CHILDREN WITH ADDITIONAL NEEDS
ADVICE, PEER SUPPORT, GUIDANCE, SIGNPOSTING
COFFEE, CAKE & CHAT
FIND OUT MORE ABOUT SERVICES FOR SUPPORT
A SAFE SPACE TO GET QUALITY SUPPORT

FAMILY SESSION!
£2 PER CHILD

Buddie's Play Den
BUDDIE'S PLAY DEN,
BRIDGE STREET, CLAY CROSS,
S45 9PD

PLEASE CONTACT THE NEUROHUB TEAM FOR ANY FURTHER INFORMATION ON 01246 886475

NEUROHUB
NEURODIVERGENCE THRIVES HERE

Fairplay

KILLAMARSH

SEN SOFT PLAY SESSION
&
PARENT/CARER SUPPORT GROUP

A CHANCE FOR CHILDREN/YOUNG PEOPLE TO SOCIALISE & PLAY

1ST SUNDAY OF EACH MONTH!
3PM-5PM

A CHANCE TO CHAT WITH OTHER PARENT/CARERS OF CHILDREN WITH ADDITIONAL NEEDS
ADVICE, PEER SUPPORT, GUIDANCE, SIGNPOSTING
COFFEE, CAKE & CHAT
FIND OUT MORE ABOUT SERVICES FOR SUPPORT
A SAFE SPACE TO GET QUALITY SUPPORT

FAMILY SESSION!

KILLAMARSH ACTIVE,
STANLEY STREET, KILLAMARSH,
SHEFFIELD, S21 1EL

PLEASE CONTACT THE NEUROHUB TEAM FOR ANY FURTHER INFORMATION ON 01246 886475

NEUROHUB
NEURODIVERGENCE THRIVES HERE

Fairplay

CHESTERFIELD

SEN SOFT PLAY SESSION
&
PARENT/CARER SUPPORT GROUP

A CHANCE FOR CHILDREN/YOUNG PEOPLE TO SOCIALISE & PLAY

A CHANCE TO CHAT WITH OTHER PARENT/CARERS OF CHILDREN WITH ADDITIONAL NEEDS
ADVICE, PEER SUPPORT, GUIDANCE, SIGNPOSTING
COFFEE, CAKE & CHAT
FIND OUT MORE ABOUT SERVICES FOR SUPPORT
A SAFE SPACE TO GET QUALITY SUPPORT

FAMILY SESSION!

DATES FOR 2026:
18TH JAN, 22ND FEB, 22ND MARCH, 26TH APRIL, 17TH MAY, 28TH JUNE, 26TH JULY, 23RD AUG, 20TH SEPT, 25TH OCT, 22ND NOV, 13TH DEC
8-30AM - 9-30AM

CHESTER'S DEN,
THE HUB SMH GROUP STADIUM, 1866 SHEFFIELD ROAD, CHESTERFIELD S41 8NZ

PLEASE CONTACT THE NEUROHUB TEAM FOR ANY FURTHER INFORMATION ON 01246 886475

NEUROHUB
NEURODIVERGENCE THRIVES HERE

Fairplay

MOVEMENT TO MUSIC

£5 PER CHILD/YOUNG PERSON

FUN & RELAXED DANCE SESSIONS!

ALL-INCLUSIVE DANCE SESSIONS WITH SUNFLOWER DANCE FOR ALL THOSE WHO LOVE TO DANCE AGED 0-25 YEARS

Siblings Welcome
1ST SATURDAY OF EACH MONTH
11AM-12PM

DCAS, SPRING BANK ROAD, CHESTERFIELD, S40 1NL

PLEASE CONTACT THE NEUROHUB TEAM FOR ANY FURTHER INFORMATION ON 01246 886475

NEUROHUB
NEURODIVERGENCE THRIVES HERE

Fairplay

CRESWELL

SEN SOFT PLAY SESSION
&
PARENT/CARER SUPPORT GROUP

A CHANCE FOR CHILDREN/YOUNG PEOPLE TO SOCIALISE & PLAY

2ND THURSDAY OF EACH MONTH!
4PM-5PM

A CHANCE TO CHAT WITH OTHER PARENT/CARERS OF CHILDREN WITH ADDITIONAL NEEDS
ADVICE, PEER SUPPORT, GUIDANCE, SIGNPOSTING
COFFEE, CAKE & CHAT
FIND OUT MORE ABOUT SERVICES FOR SUPPORT
A SAFE SPACE TO GET QUALITY SUPPORT

FAMILY SESSION!
£3 PER CHILD

CRESWELL HERITAGE AND WELLBEING CENTRE
COLLIERY ROAD, CRESWELL, WORKSOP, S80 4BX

PLEASE CONTACT THE NEUROHUB TEAM FOR ANY FURTHER INFORMATION ON 01246 886475

NEUROHUB
NEURODIVERGENCE THRIVES HERE

Fairplay

UNDER 12'S FAMILY SENSORY SESSION

FAIRPLAY CENTRE,
ALEXANDRA ROAD WEST,
CHESTERFIELD,
S40 1NP

1.30PM-2.30PM
£2.50 PER CHILD
NO BOOKING REQUIRED

COME AND JOIN US FOR A SENSORY LEARNING SESSION FOR YOU AND YOUR CHILD.
SENSORY ACTIVITIES, SENSORY ROOM, GAMES, OUTSIDE AREA FOR YOU TO ENJOY TOGETHER AND MAKE FRIENDSHIPS WITH OTHER PARENTS/CARERS.

UPCOMING SESSIONS IN 2026:
20TH JUNE

For more information please contact 01246 886475



01246 886475



neurohub@fair-play.co.uk



neurohub-derbyshire



neurohub_derbyshire



MONTHLY CALENDAR

MAY
2026



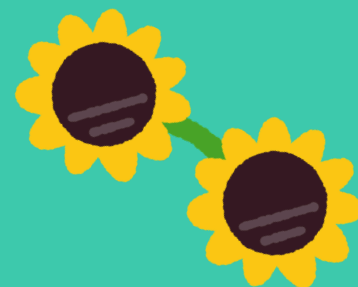
THE NEUROHUB IS ON FACEBOOK AND INSTAGRAM. PLEASE FIND US AT



@NEUROHUB_DERBYSHIRE



@NEUROHUB-DERBYSHIRE



JUNE 2026

MON	TUE	WED	THU	FRI	SAT	SUN
1	2	3 Glapwell Parent/Carer Support Group 9.30am-11.30am	4	5 DPCV joint Drop-In Bolsover 10am-2pm	6 Buddies Play Den 9am-10am Movement to Music 11am-12pm	7 Killamarsh Play Session 3pm-5pm
8	9 RSE Workshop 10am-12pm Creswell Parent/Carer Support Group 1.15pm-2.45pm	10 Making sense of your child's sensory world Workshop 10am-12pm	11 Alfreton Parent/Carer Support Group 9:30am-11am Creswell Heritage & Wellbeing Centre Play Session 4pm-5pm	12	13	14
15	16	17 Dronfield Parent/Carer Support Group 1pm-3pm	18	19 DPCV joint Drop-In Loscoe 10am-2pm	20 Under 12's Family Session 1.30pm-2.30pm	21
22	23	24 Level Up 1.30pm-5.30pm	25	26 Creative Connections 5.30pm-7pm	27 Buddies Play Den 9am-10am	28 Chester's Den 8.30am-9.30am
29	30 Matlock Parent/Carer Support Group 10am-12pm					



01246 886475



neurohub@fair-play.co.uk



neurohub-derbyshire



neurohub_derbyshire