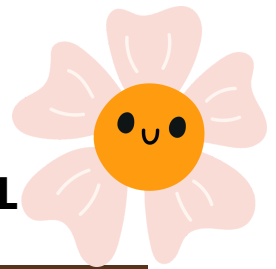


NEUROHUB

NEWSLETTER

APRIL
2026



Monthly Sessions

Buddie's Play Den

First & last Saturday of the month we host an Under 10's SEN play session at Buddie's Play Den in Clay Cross.

Movement to Music

First Saturday of the month we host themed SEN dance sessions with Sunflower Dance.

Chester's Den

Third Sunday of each month we host a SEN play session at Chester's Den at the Football Club.

Killamarsh Play Session

First Sunday of each month we host a SEN play Session at Killamarsh Active Leisure Centre.

Level-Up

One Wednesday each month we host family board game sessions at the Board & Bean cafe in Chesterfield to socialise and relax.

Creative Connections

One Friday evening a month we host a family creative arts session that includes music, art, drama and movement activities at DCAS.

Under 12's Family Sensory Session

One Saturday each month we host a sensory session at the Fairplay Centre where families can access sensory activities and our sensory room.

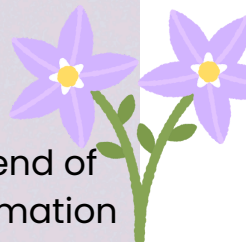


Photo taken at our 'Sip, Paint & Relax' parent/carer wellbeing evening

Upcoming Events

- **ADHD Workshop - Wednesday 13 May**
- **Horse Riding Session - Thursday 28 May**

See upcoming events at the end of the newsletter for further information



01246 886475



neurohub@fair-play.co.uk



neurohub-derbyshire



neurohub_derbyshire



SESSION SUM-UPS

APRIL
2026



We run lots of different groups and sessions – for those who have not been before this seemed like a good opportunity to share what to expect at each group:

SEND SOFT PLAY SESSIONS

We run numerous SEND Soft Play Sessions across Derbyshire. These sessions are just for our families so they are often much quieter than mainstream soft play. The aim of these sessions is to provide safe, non-judgemental environments where children can play and be themselves, make new friendships and enjoy themselves. Parents/carers can also get any support needed from staff as well as connect with other local families.



UNDER 12S FAMILY SENSORY SESSION

These family sensory sessions take place at the Fairplay Centre in Chesterfield. Families can socialise with others, enjoy access to our large sensory room as well as take part in lots of sensory activities. Staff are always available for advice and support too. These are relaxed sessions to enjoy and unwind in!



MOVEMENT TO MUSIC

Our Movement to Music group is an inclusive dance group for all ages 0-25 years. We have a fabulous instructor from Sunflower Dance, who encourages participants to get moving with some great routines, games and music. These sessions are just for fun – there is never any pressure to perform, just enjoy, make friendships and laugh with others! Staff are always there to make drinks for parents/carers and offer any advice and support families may need.



01246 886475



neurohub@fair-play.co.uk



neurohub-derbyshire



neurohub_derbyshire



APRIL RECAP

APRIL
2026



LEVEL-UP

We host an inclusive board game session at the Board & Bean Cafe in Chesterfield. The aim of this group is to offer families a safe place to try new games, make new friendships and enjoy being out in the community. We sit in a quieter side-room where we have a calm space to play games together as well as have fantastic refreshments that can be purchased from the cafe.



CREATIVE CONNECTIONS

Once a month we run a family creative arts session! These are great opportunities to meet others, learn new skills and make a mess somewhere that's not home!

Parents/carers are encouraged to join in with the activities too but can also enjoy a cup of tea and a natter with others if they would prefer.

NeuroHub staff are around to help with the activities as well as give any support and advice needed by parents/carers.



SOCIAL DROP-IN SESSIONS

These sessions are held twice a month at the Fairplay Centre in Chesterfield. Here we have a lovely cabin where you can relax and enjoy refreshments as well as get support from the NeuroHub team. We also have a secure outdoor play area for any children/young people who want to go and play! Due to the 'drop-in' nature of these sessions we never know if there will be lots of other families there or whether you'll get the Hub team all to yourself!

To see more updates and photos from any of our sessions - please have a look at our social media pages!





MONTHLY CALENDAR

APRIL
2026



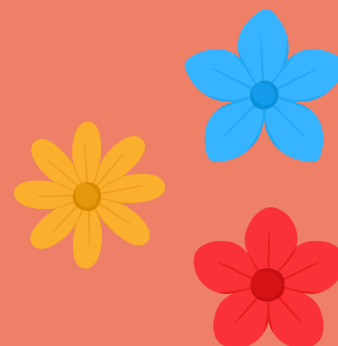
THE NEUROHUB IS ON FACEBOOK AND INSTAGRAM. PLEASE FIND US AT



@NEUROHUB_DERBYSHIRE



@NEUROHUB-DERBYSHIRE



May 2026



MON

TUE



WED

THU

FRI

SAT

SUN

					1	Buddies Play Den 2 9am-10am	Killamarsh Play Session 3 3pm-5pm
4	5	6 Glapwell Parent/Carer Support Group 9.30am-11.30am	7	8 Social Drop-In 10am-12pm	9 Movement to Music 11am-12pm	10	
11	12 Chesterfield Parent/Carer Support Group 10am-12pm Creswell Parent/Carer Support Group 1.15pm- 2.45pm	13 ADHD Workshop 10am-12pm	14 Creswell Heritage & Wellbeing Centre Play Session 4pm-5pm	15	16 Under 12's Family Session 1.30pm-2.30pm	17	Chester's Den 8.30am-9.30am
18	19	20 Dronfield Parent/Carer Support Group 6.30pm- 8.30pm	21	22 Social Drop-In 10am-12pm	23	24	
25 	26 Matlock Parent/Carer Support Group 10am-12pm	27 Level Up 1.30pm-5.30pm	28 Horse Riding Session 10am-11am or 11am-12pm	29 Creative Connections 5.30pm-7pm	30 Buddies Play Den 9am-10am	31 	



01246 886475



neurohub@fair-play.co.uk



neurohub-derbyshire



neurohub_derbyshire



REGULAR SESSIONS FOR PARENTS/CARERS

APRIL 2026



We have monthly parent/carer support groups in various areas. These are great opportunities to build support networks with other local understanding parents/carers as well as getting advice and guidance from NeuroHub staff.

We also have 1:1 appointments available for families to book.

Our Social Drop-In sessions, held twice a month, on Friday mornings can also be a great time to meet others as well as get any support needed from the NeuroHub team.

NEUROHUB NEURODIVERGENCE THRIVES HERE Fairplay

SOCIAL DROP-IN

Dates for 2026:
10am-12pm
January 9th & 23rd
February 6th & 20th
March 6th & 20th
April 10th & 17th
May 8th & 22nd
June 5th & 19th
July 3rd & 17th
August 7th & 21st
September 4th & 18th
October 2nd & 16th
November 6th & 20th
December 4th & 18th

Location:
Fairplay,
Alexandra Road West,
Chesterfield,
S40 1NP

Please park in Mecca Bingo's pay and display carpark

- Meet others - Parent/carers, children & young people
- Outdoor play area & activities
- Chance for social support as well as advice & guidance from the NeuroHub team
- Refreshments

For more information please contact hub enquiries on 01246 886475

NEUROHUB NEURODIVERGENCE THRIVES HERE Fairplay

GLAPWELL PARENT/CARER SUPPORT GROUP

For parents/carers of children with additional needs (no diagnosis needed)

2026 Dates:
9:30am-11:30am:
7th Jan,
4th Feb,
4th March,
1st April,
6th May,
3rd June,
1st July,
5th Aug,
2nd Sept,
7th Oct,
4th Nov,
2nd Dec.

Location:
Glapwell Centre,
The Green, Glapwell, Chesterfield
S44 5LW

Children welcome (toys available!)

Advice, guidance & signposting

A safe space to get quality support

Coffee, cake & a chat!

A chance to talk to peers who understand

PLEASE CONTACT THE NEUROHUB TEAM FOR ANY FURTHER INFORMATION ON 01246 886475

NEUROHUB NEURODIVERGENCE THRIVES HERE Fairplay

CRESWELL PARENT AND CARER SUPPORT GROUP

Dates for 2026:
1:15pm - 2:45pm
3rd February
3rd March
12th May
9th June
7th July

A safe space to get quality support

A chance to talk to peers who understand

Join us for coffee, cake & a chat!

Advice, guidance & signposting

For parents & carers of children with additional needs

Location:
CRESWELL
C OF E INFANT AND
NURSERY SCHOOL
GPSY LN,
CRESWELL,
WORKSOP,
S80 4HY

PLEASE CONTACT THE NEUROHUB TEAM FOR ANY FURTHER INFORMATION ON 01246 886475

NEUROHUB NEURODIVERGENCE THRIVES HERE Fairplay

CHESTERFIELD PARENT AND CARER SUPPORT GROUP

Dates for 2026:
10am-12pm
13th January,
10th February, 10th March,
14th April, 12th May,
9th June, 14th July,
11th August, 8th September,
13th October,
10th November,
8th December

A safe space to get quality support

A chance to talk to peers who understand

Join us for coffee, cake & a chat!

Advice, guidance & signposting

For parents & carers of children with additional needs

Location:
FAIRPLAY CENTRE,
ALEXANDRA ROAD
WEST,
CHESTERFIELD,
S40 1NP
Please park in the pay & display car park in Mecca Bingo

PLEASE CONTACT THE NEUROHUB TEAM FOR ANY FURTHER INFORMATION ON 01246 886475

NEUROHUB NEURODIVERGENCE THRIVES HERE Fairplay

DRONFIELD PARENT AND CARER SUPPORT GROUP

Dronfield Peel Centre, High Street, Dronfield, S18 1PX (Free parking at the Civic Centre or Sainsbury's on Wreakes Lane)

Dates for 2026:
21st January 6:30pm-8:30pm
25th February 1pm-3pm
18th March 6:30pm-8:30pm
22nd April 1pm-3pm
20th May 6:30pm-8:30pm
17th June 1pm-3pm

For parents & carers of children with additional needs

Join us for coffee, cake & a chat!

A chance to talk to peers who understand

A safe space to get quality advice & support

PLEASE CONTACT THE NEUROHUB TEAM FOR ANY FURTHER INFORMATION ON 01246 886475

NEUROHUB NEURODIVERGENCE THRIVES HERE Fairplay

MATLOCK PARENT/CARER SUPPORT GROUP

Join us for coffee, cake & a chat!

A chance to talk to peers who understand

For parents & carers of children with additional needs

A safe space to get quality support

Advice, guidance & signposting

Dates for 2026:
All sessions are 10am - 12pm
27th January 28th July
24th February 25th August
31st March 29th September
28th April 27th October
26th May 24th November
30th June

Location:
Ostello Lounge,
Derwent House,
Crown Square,
Matlock DE4 3AT

PLEASE CONTACT THE NEUROHUB TEAM FOR ANY FURTHER INFORMATION ON 01246 886475



REGULAR SESSIONS FOR CHILDREN & YOUNG PEOPLE

APRIL 2026

Monthly sessions for children/young people to access! Siblings are always welcome to come join in the activities too. These sessions can be wonderful chances to come get advice & guidance from NeuroHub staff whilst children play.

NEUROHUB
NEURODIVERGENCE THRIVES HERE

Fairplay

CLAY CROSS

SEN SOFT PLAY SESSION
&
PARENT/CARER SUPPORT GROUP

A CHANCE FOR CHILDREN/YOUNG PEOPLE TO SOCIALISE & PLAY

1ST & LAST SATURDAY OF EACH MONTH!
9AM-10AM

A CHANCE TO CHAT WITH OTHER PARENT/CARERS OF CHILDREN WITH ADDITIONAL NEEDS
ADVICE, PEER SUPPORT, GUIDANCE, SIGNPOSTING
COFFEE, CAKE & CHAT FIND OUT MORE ABOUT SERVICES FOR SUPPORT
A SAFE SPACE TO GET QUALITY SUPPORT

FAMILY SESSION!
£2 PER CHILD

Buddie's Play Den
BUDDIE'S PLAY DEN,
BRIDGE STREET, CLAY CROSS,
S45 9PD

PLEASE CONTACT THE NEUROHUB TEAM FOR ANY FURTHER INFORMATION ON 01246 886475

NEUROHUB
NEURODIVERGENCE THRIVES HERE

Fairplay

KILLAMARSH

SEN SOFT PLAY SESSION
&
PARENT/CARER SUPPORT GROUP

A CHANCE FOR CHILDREN/YOUNG PEOPLE TO SOCIALISE & PLAY

1ST SUNDAY OF EACH MONTH!
3PM-5PM

A CHANCE TO CHAT WITH OTHER PARENT/CARERS OF CHILDREN WITH ADDITIONAL NEEDS
ADVICE, PEER SUPPORT, GUIDANCE, SIGNPOSTING
COFFEE, CAKE & CHAT
FIND OUT MORE ABOUT SERVICES FOR SUPPORT
A SAFE SPACE TO GET QUALITY SUPPORT

FAMILY SESSION!

KILLAMARSH ACTIVE,
STANLEY STREET, KILLAMARSH,
SHEFFIELD, S21 1EL

PLEASE CONTACT THE NEUROHUB TEAM FOR ANY FURTHER INFORMATION ON 01246 886475

NEUROHUB
NEURODIVERGENCE THRIVES HERE

Fairplay

CHESTERFIELD

SEN SOFT PLAY SESSION
&
PARENT/CARER SUPPORT GROUP

A CHANCE FOR CHILDREN/YOUNG PEOPLE TO SOCIALISE & PLAY

A CHANCE TO CHAT WITH OTHER PARENT/CARERS OF CHILDREN WITH ADDITIONAL NEEDS
ADVICE, PEER SUPPORT, GUIDANCE, SIGNPOSTING
COFFEE, CAKE & CHAT
FIND OUT MORE ABOUT SERVICES FOR SUPPORT
A SAFE SPACE TO GET QUALITY SUPPORT

FAMILY SESSION!

DATES FOR 2026:
18TH JAN, 22ND FEB, 22ND MARCH, 26TH APRIL, 17TH MAY, 28TH JUNE, 26TH JULY, 23RD AUG, 20TH SEPT, 25TH OCT, 22ND NOV, 13TH DEC
8:30AM - 9:30AM

CHESTER'S DEN,
THE HUB SMH GROUP STADIUM, 1866 SHEFFIELD ROAD, CHESTERFIELD S41 8NZ

PLEASE CONTACT THE NEUROHUB TEAM FOR ANY FURTHER INFORMATION ON 01246 886475

NEUROHUB
NEURODIVERGENCE THRIVES HERE

LEVEL UP

SEN Family Drop-in Session

Come to socialise, play board games, as well as enjoy lovely food & drinks in the cafe!
Fun for all the family!

Children/Young People
Welcome Aged up to 25 years

Upcoming Sessions in 2026:

27th May	26th August
24th June	30th September
29th July	28th October
	25th November

FREE!
1:30pm - 5:30pm

Unit 1,
4 New Beetwell Street,
Chesterfield,
S40 1QR

BOARD & BEAN

Fairplay

For more information please contact the office on 01246 886475

Fairplay

NEUROHUB
NEURODIVERGENCE THRIVES HERE

UNDER 12'S FAMILY SENSORY SESSION

FAIRPLAY CENTRE,
ALEXANDRA ROAD WEST,
CHESTERFIELD,
S40 1NP
130PM-230PM
£2.50 PER CHILD
NO BOOKING REQUIRED

COME AND JOIN US FOR A SENSORY LEARNING SESSION FOR YOU AND YOUR CHILD.
SENSORY ACTIVITIES, SENSORY ROOM, GAMES, OUTSIDE AREA FOR YOU TO ENJOY TOGETHER AND MAKE FRIENDSHIPS WITH OTHER PARENTS/CARERS.

UPCOMING SESSIONS IN 2026:
18 APRIL
16 MAY

For more information please contact 01246 886475

Fairplay

NEUROHUB
NEURODIVERGENCE THRIVES HERE

CREATIVE CONNECTIONS

SEN FAMILY CREATIVE ARTS SESSIONS
FOR CHILDREN/YOUNG PEOPLE AGED UP TO 25 YEARS & THEIR FAMILIES/CARERS

DCAS, SPRING BANK ROAD, CHESTERFIELD, S40 1NL

5:30PM - 7PM

2026 SESSIONS:

MAY 29 TH	SEPTEMBER 25 TH
JUNE 26 TH	OCTOBER 23 RD
JULY 24 TH	NOVEMBER 27 TH
AUGUST 28 TH	DECEMBER 18 TH

Come take part in creative activities, build confidence & meet others!
(No Diagnosis Needed)
Fun For The Whole Family!

£5 PER CHILD/YOUNG PERSON PARENTS/CARERS - FREE!

PLEASE CONTACT THE NEUROHUB TEAM FOR ANY FURTHER INFORMATION ON 01246 886475



HORSE RIDING SESSION

£28 per
person
(Payment
is required
at time of
booking)

THURSDAY 28TH MAY

10am-11am

or

11am-12pm

Villa Mar Riding
School

Villa Mar, Langwith
Road, Bolsover,
Chesterfield
S44 6HP



To book your 1 hour riding slot please call
01246 886475. There are limited places!





NEW SESSION

**APRIL
2026**



NEUROHUB
NEURODIVERGENCE THRIVES HERE



CRESWELL

SEN SOFT PLAY SESSION

**&
PARENT/CARER SUPPORT GROUP**

**A CHANCE FOR
CHILDREN/YOUNG PEOPLE TO
SOCIALISE & PLAY**

**2ND
THURSDAY OF
EACH MONTH!
4PM-5PM**



**A CHANCE TO CHAT WITH
OTHER PARENT/CARERS OF
CHILDREN WITH
ADDITIONAL NEEDS**

**★ ADVICE, PEER SUPPORT,
GUIDANCE, SIGNPOSTING**

**★ COFFEE, CAKE & CHAT
★ FIND OUT MORE ABOUT
SERVICES FOR SUPPORT**

**★ A SAFE SPACE TO GET
★ QUALITY SUPPORT**

FAMILY SESSION!

£3 PER CHILD

**CRESWELL HERITAGE AND WELLBEING CENTRE
COLLIERY ROAD, CRESWELL, WORKSOP, S80 4BX**

**PLEASE CONTACT THE NEUROHUB TEAM FOR ANY FURTHER INFORMATION ON
01246 886475**



01246 886475



neurohub@fair-play.co.uk



neurohub-derbyshire



neurohub_derbyshire